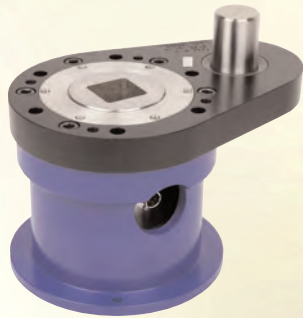


### Hydraulic Tool Calibration Fixtures

Norbar's Hydraulic Tool Calibration Fixture is a robust device that allows accurate testing of hydraulic torque wrenches. A system comprises of a Calibration Fixture and Transducer from the tables below. Also required is a torque measuring instrument, see pages 70 - 75 and transducer cable, see page 80.

- Bearing support for transducer gives improved accuracy.
- Interchangeable stainless steel square and round reaction posts.
- Hardened steel inserts to locate reaction posts in two positions: suits most hydraulic wrenches.
- Optimised material sections for robust but portable design.
- For hexagon link wrenches, a wide range of hexagon to square adaptors is available. Contact Norbar for information.



80021 with Transducer fitted.

### Hydraulic Tool Calibration Fixtures

Part No.	Capacity	Square Drive
80021	7000 N.m	1 1/2"
80022	50000 N.m	2 1/2"
80023	80000 N.m	3 1/2"



### Sleeve Adaptors

Part No.	Male Square	Female Square	Max Torque
86034.4	1 1/2"	3/4"	1200 N.m
21214	1 1/2"	1"	3500 N.m
29617	2 1/2"	1 1/2"	10500 N.m
29618	3 1/2"	2 1/2"	50000 N.m

### Transducers

Part No.	Description	For use with
50703.xxx	250 - 2500 N.m 1 1/2" sq. dr.	80021
50704.xxx	250 - 2500 lbf.ft 1 1/2" sq. dr.	80021
50599.xxx	500 - 5000 N.m 1 1/2" sq. dr.	80021
50630.xxx	500 - 5000 lbf.ft 1 1/2" sq. dr.	80021
50669.xxx	700 - 7000 N.m 1 1/2" sq. dr.	80021
50776.xxx	1000 - 10000 N.m 2 1/2" sq. dr.	80022
50777.xxx	1000 - 10000 lbf.ft 2 1/2" sq. dr.	80022
50778.xxx	2500 - 25000 N.m 2 1/2" sq. dr.	80022
50779.xxx	2500 - 25000 lbf.ft 2 1/2" sq. dr.	80022
50780.xxx	3000 - 30000 lbf.ft 2 1/2" sq. dr.	80022
50781.xxx	5000 - 50000 N.m 2 1/2" sq. dr.	80022
50782.xxx	6000 - 60000 lbf.ft 3 1/2" sq. dr.	80023
50783.xxx	8000 - 80000 N.m 3 1/2" sq. dr.	80023

Harsh Environment Transducers available on request.

### API Intervention Tool Test Pots

These reaction pots allow for the accurate testing of API rotary intervention tools.

- Conform to ISO 13628-8:2002(E).
- Customer specific solutions also available.
- Lightweight all aluminium construction.
- Incorporated lifting handles.
- Eye bolts provided on larger units
- Optional deck mount kit available, Part No. 81018.



Class 4 Intervention Tool Test Pot Kit includes: Pot, TTL-HE instrument, HE Transducer, Transducer lead and waterproof case.

### Test Pots and Kits

Part No.	Description
80019	Class 4 Pot
60278.xxx	Class 4 Kit
80020	Class 7 Short Pot*
60279.xxx	Class 7 Short Kit*

\* FMC. Receptacle to suit 'short' FMC style Class 7 rotary torque intervention tools.



Other sizes available on request.